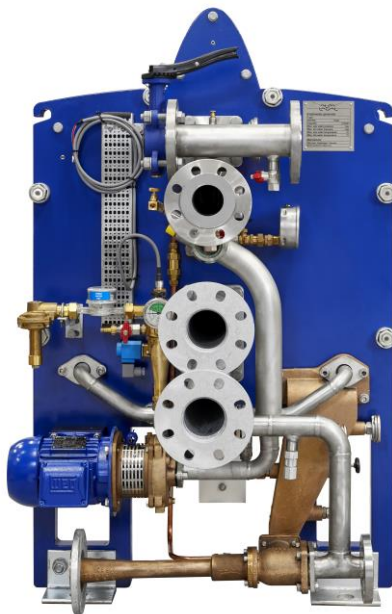




January 2018

The new Alfa Laval AQUA Blue S-type freshwater generator cuts power consumption by almost 70%

When it was introduced in 2008, Alfa Laval's AQUA freshwater generation technology cut seawater needs and pump-related power consumption in half. With today's AQUA Blue S-type, the need for electrical power is further reduced – to just one-third that of conventional freshwater generators.



Alfa Laval AQUA Blue S-type

The new AQUA Blue S-type uses the same 3-in-1 AQUA plate technology as the original C-type configuration. But it maximizes energy efficiency and capacity-to-footprint ratio by making use of the vessel's existing seawater cooling system pumps. This cuts electrical power needs by 70% compared to conventional freshwater generators, and it shrinks the already small AQUA Blue footprint by up to 15%.

“AQUA freshwater generation technology revolutionized energy use in a very well-established application,” says Alex Jönsson, Global Business Manager for Alfa Laval freshwater generators. “With the AQUA Blue S-type, we further reduce the energy-related costs for shipowners – as well as the installation costs for shipyards.”

Greater installation flexibility

Besides its smaller footprint, the AQUA Blue S-type offers shipyards a considerable amount of new flexibility, including a range of connection alternatives. Because it makes use of the vessel’s seawater cooling system pumps, it employs a smaller ejector and a smaller, separately installed ejector pump. Likewise, the pipework can be both shorter and smaller in diameter.

In addition, the S-type handles a wider span of pressures, which means the configuration can be adapted to the highest or lowest water level. An adapted configuration is able to deal with higher pressure in the overboard line, which allows the freshwater generator to be placed more freely on board.

Always the right freshwater generator option

Having the choice between an S-type or C-type configuration of AQUA Blue ensures an ideal match for ship owner and shipyard priorities. The AQUA Blue C-type, which has a combined cooling water and ejector flow, has a single seawater connection to the vessel’s sea chest. This makes it independent of other equipment and conditions in the vessel’s seawater cooling system.

“Whichever configuration customers choose, they will receive a truly robust solution,” says Jönsson. “AQUA Blue is designed not only for energy and footprint savings, but also to last the lifetime of the vessel.”

To learn more about AQUA Blue and Alfa Laval’s approach to freshwater generation, visit www.alfalaval.nl/aqua.

For further information, please contact:

Heleen van Hout, Marketing Communication Coordinator
Phone: +31 (0)76 57 91 210
E-mail: heleen.vanhout@alfalaval.com

You can also stay up-to-date with marine industry news at Alfa Laval by visiting the [Marine Division's LinkedIn page](#).

Editor's notes

About Alfa Laval

Alfa Laval is a leading global provider of specialized products and engineering solutions based on its key technologies of heat transfer, separation and fluid handling.

The company's equipment, systems and services are dedicated to assisting customers in optimizing the performance of their processes. The solutions help them to heat, cool, separate and transport products in industries that produce food and beverages, chemicals and petrochemicals, pharmaceuticals, starch, sugar and ethanol.

Alfa Laval's products are also used in power plants, aboard ships, oil and gas exploration, in the mechanical engineering industry, in the mining industry and for wastewater treatment, as well as for comfort climate and refrigeration applications.

Alfa Laval's worldwide organization works closely with customers in nearly 100 countries to help them stay ahead in the global arena.

Alfa Laval's worldwide organization works closely with customers in nearly 100 countries to help them stay ahead in the global arena. Alfa Laval is listed on Nasdaq OMX, and, in 2016, posted annual sales of about SEK 35.6 billion (approx. 3.77 billion Euros). The company has about 17 000 employees.

www.alfalaval.nl