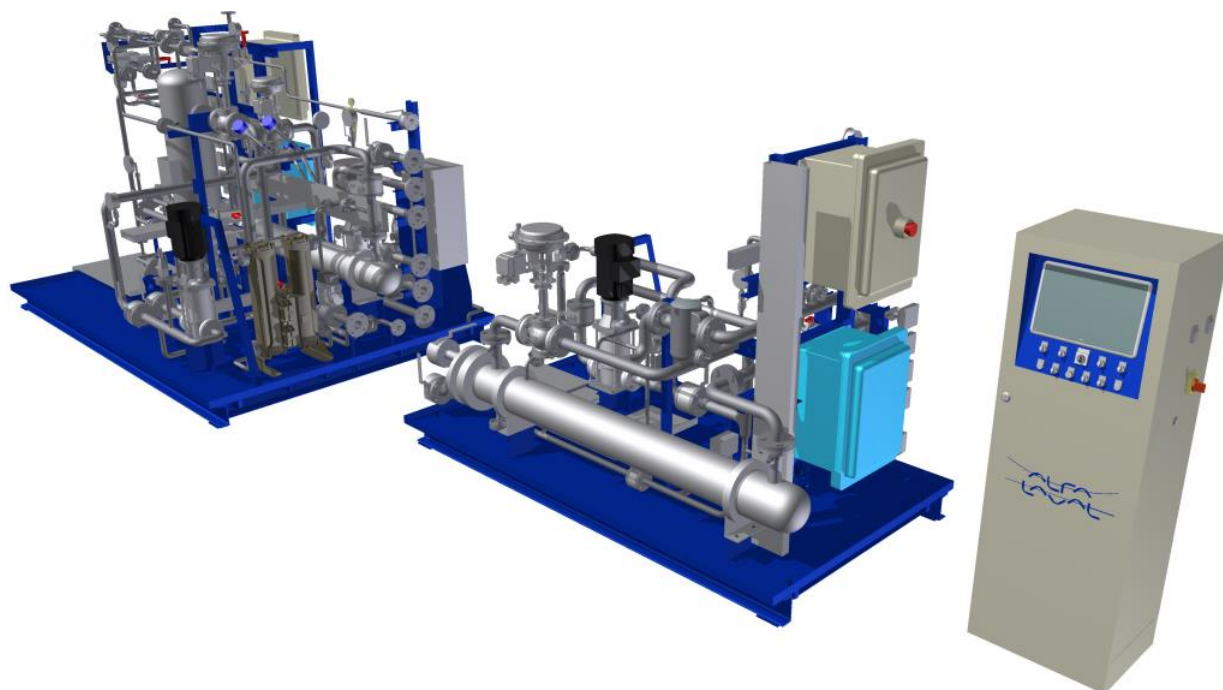




May 2017

## Alfa Laval methanol booster systems excel in over 4500 hours of operation

**Alfa Laval FCM One Low-Flashpoint (LF) booster systems have been a clear success on methanol-fuelled tankers with ME-LGI engines. Now Alfa Laval is supporting MAN Diesel & Turbo as the engine series is further developed to work with LPG.**



### ***Alfa Laval FCM One LFF - Methanol***

In late 2013, Alfa Laval was selected by MAN Diesel & Turbo to deliver Low-Flashpoint Supply Systems (LFSS) for the world's first methanol-fuelled tankers. Since 2012, the two companies had been collaborating broadly on fuel conditioning for MAN Diesel & Turbo's new two-stroke diesel engines with Liquefied Gas Injection (LGI) technology. But when the engine maker contracted to equip nine vessels with methanol-burning ME-LGI engines, methanol came quickly into focus.

"MAN Diesel & Turbo has worked closely with Alfa Laval in development projects like Exhaust Gas Recirculation, where Alfa Laval PureNOx technology cleans the circulation water," says Søren H. Jensen, Vice President and Head of R&D, Two-Stroke Business at MAN Diesel & Turbo. "That, together with deep expertise in fuel conditioning, made Alfa Laval the natural choice to deliver the Low-Flashpoint Supply Systems for methanol."

### **Proven in thousands of hours at sea**

The finished booster technology, the Alfa Laval FCM One Low-Flashpoint (LF), was installed on tankers built at Minaminippon in Japan and Hyundai Mipo Dockyard in Korea. The vessels' three owners, MOL, Westfal-Larsen and Marinvest, have since logged over 4500 running hours with the FCM One LF in the past three years.

"The effectiveness and market-readiness of our ME-LGI engine technology has been clearly demonstrated by the fleet, says Kjeld Aabo, Customer Director at MAN Diesel & Turbo. "Alfa Laval's low-flashpoint booster technology has played a significant role in that success, and we look forward to further cooperation as the application develops."

### **LPG booster ready for testing**

In fact, new booster developments are already underway. MAN Diesel & Turbo is currently modifying the ME-LGI engine series to use LPG as an alternative fuel, and once again Alfa Laval is preparing the booster system. After more than one year of development, the first Alfa Laval FCM One LPG will be delivered to the MAN Diesel & Turbo's Copenhagen test site in the coming weeks.

"Tests of the engine and booster are expected to be completed by the end of 2017," says Roberto Comelli, Business Manager, Fuel Conditioning Systems at Alfa Laval. "In the meantime, Alfa Laval is preparing to support MAN Diesel & Turbo when the first LPG-related orders come in. We are proud to be associated with LGI engine technology and to help bring more customers access to this low-emission alternative."

To learn more about the Alfa Laval FCM One LF and Alfa Laval's approach to fuel conditioning, visit [www.alfalaval.nl/marine](http://www.alfalaval.nl/marine)

### **For further information, please contact:**

Heleen van Hout  
Marketing Communication Coordinator  
Phone: +31 (0)76 57 91 210  
E-mail: [heleen.vanhout@alfalaval.com](mailto:heleen.vanhout@alfalaval.com)

You can also stay up-to-date with marine industry news at Alfa Laval by visiting the [Marine Division's LinkedIn page](#).

## **Editor's notes**

### About Alfa Laval

Alfa Laval is a leading global provider of specialized products and engineering solutions based on its key technologies of heat transfer, separation and fluid handling.

The company's equipment, systems and services are dedicated to assisting customers in optimizing the performance of their processes. The solutions help them to heat, cool, separate and transport products in industries that produce food and beverages, chemicals and petrochemicals, pharmaceuticals, starch, sugar and ethanol.

Alfa Laval's products are also used in power plants, aboard ships, oil and gas exploration, in the mechanical engineering industry, in the mining industry and for wastewater treatment, as well as for comfort climate and refrigeration applications.

Alfa Laval's worldwide organization works closely with customers in nearly 100 countries to help them stay ahead in the global arena.

Alfa Laval's worldwide organization works closely with customers in nearly 100 countries to help them stay ahead in the global arena. Alfa Laval is listed on Nasdaq OMX, and, in 2016, posted annual sales of about SEK 35.6 billion (approx. 3.77 billion Euros). The company has about 17 000 employees.

[www.alfalaval.nl](http://www.alfalaval.nl)